A map of Clackamas County, Oregon, showing various local government districts and service areas. The map is overlaid with a semi-transparent white box containing text. The districts shown include Tualatin Valley Water District, Lake Grove Fire District #1, Tri-City Service District, Clackamas River Water District, and others. The text is centered on the map.

The Paradox of our Love-Hate relationship with Self-Government

A brief survey of local self-governance
in the northwest corner of Clackamas County, Oregon

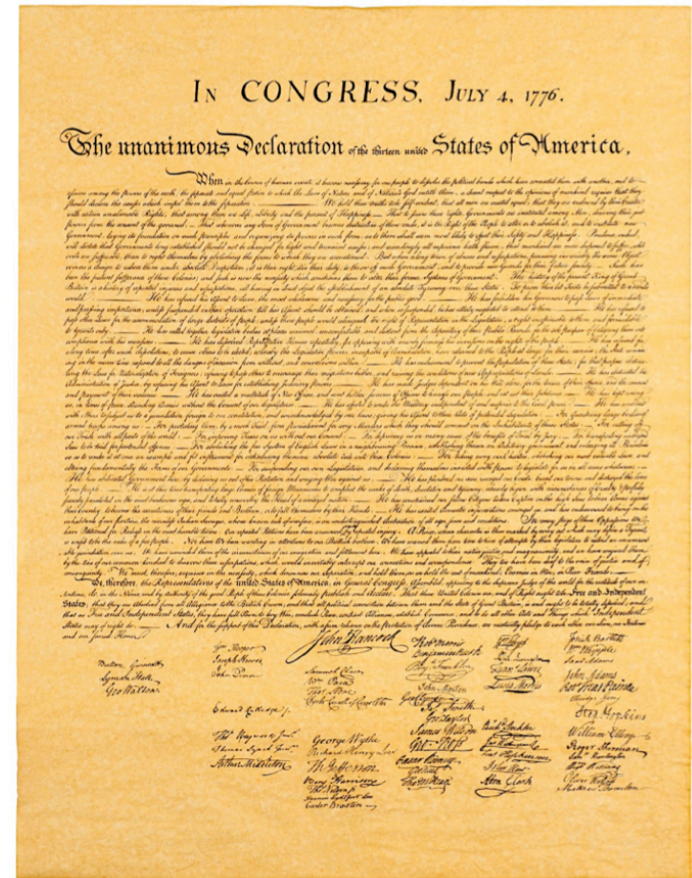
Presented by Dan Vizzini
at the request of the Oak Lodge Governance Project
March 13, 2021

America's Civic Faith... Citizens are Sovereigns

We hold these truths to be self-evident,

- that all men are created equal,
- that they are endowed by their Creator with certain unalienable Rights,
- that among these are Life, Liberty and the pursuit of Happiness.
- *that to secure these rights, Governments are instituted among Men,*
- *deriving their just powers from the consent of the governed*

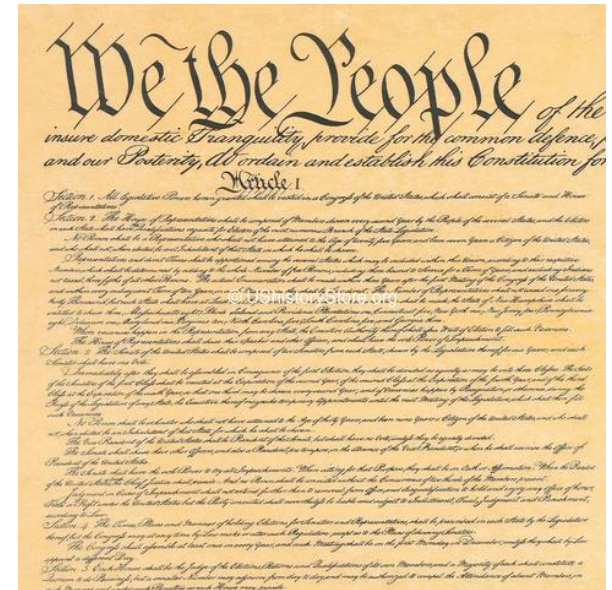
Declaration of Independence



and Civic Creed... limited self-government

The powers not delegated to the United States by the Constitution, nor prohibited by it to the States, are reserved to the States respectively, or to the people.

10th amendment of the United States Constitution



and yet there is a nagging doubt and distrust...

Government, even in its best state, is but a necessary evil;
in it's worst state, an intolerable one.

Thomas Paine

How soon we forget history... government is not reason.
Government is not eloquence. It is a force.
And like fire, it is a dangerous servant and a fearful master.

George Washington

When the people fear their government, there is tyranny.
When the government fears the people, there is liberty.

Thomas Jefferson

If men were angels, no government would be necessary. If angels were to govern men, neither external nor internal controls on government would be necessary. In framing a government which is to be administered by men over men, the great difficulty lies in this: you must first enable the government to control the governed; and in the next place oblige it to control itself.

James Madison

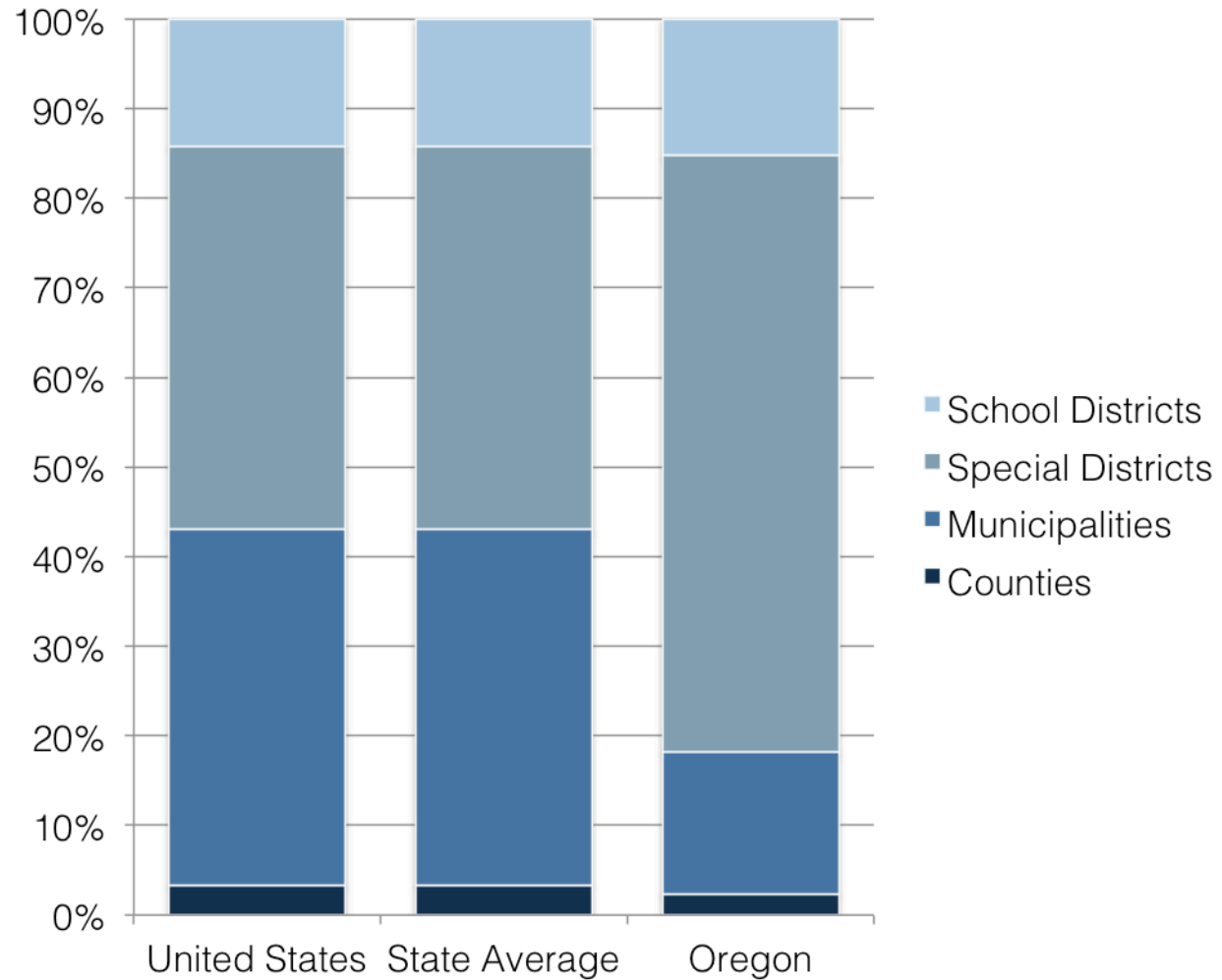
245 years later...

	United States	Oregon
Federal Government	1	0
States	50	1
Territories	5	0
Counties	3,031	36
Incorporated Places	35,748	240
Special Purpose Districts	38,542	1,004
Independent School Districts	12,754	230
Total Government Units	90,131	1,511

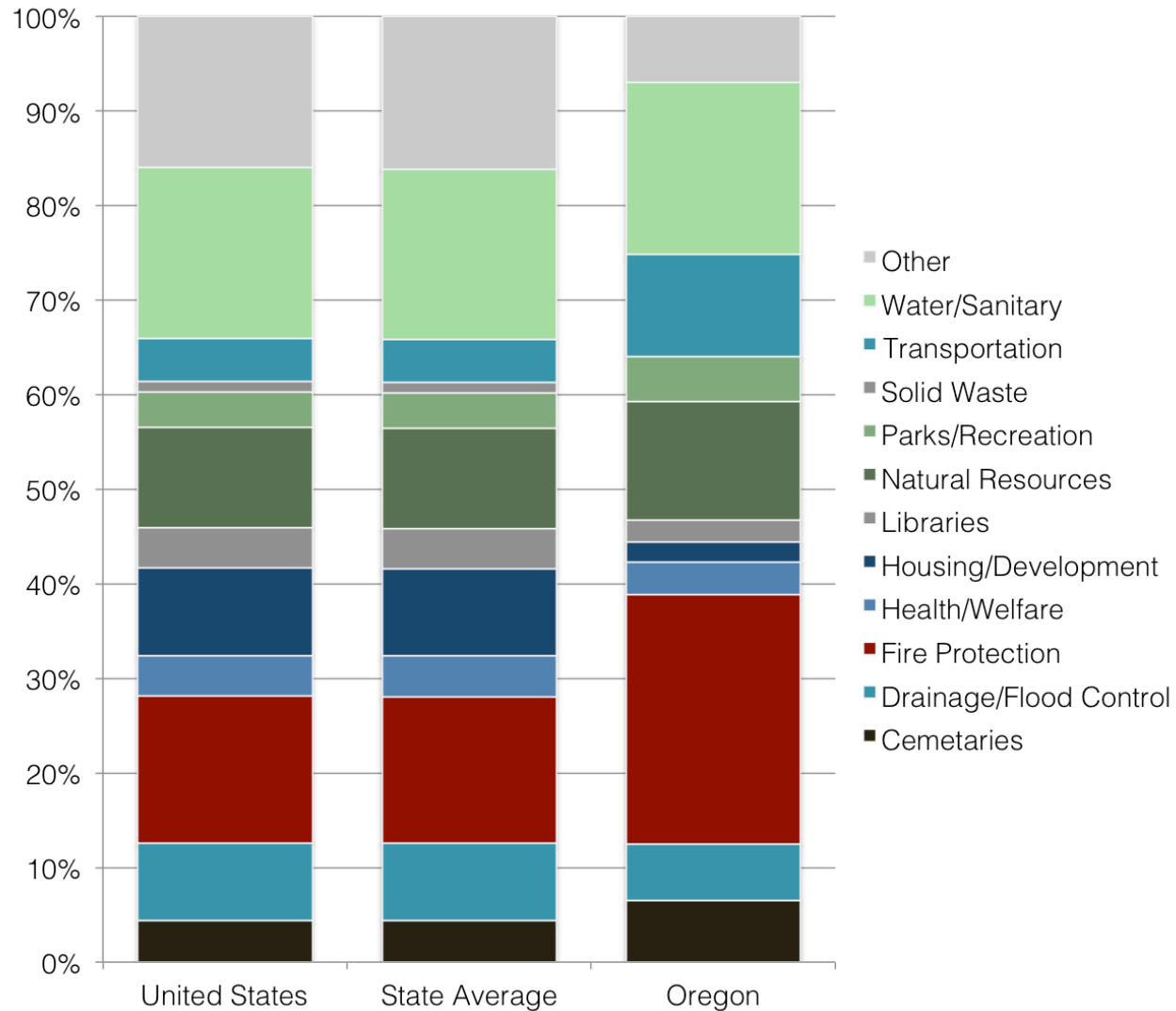
Source: US Census of Governments 2017

Note: Sub-state government units include Washington DC, but exclude territories

Mix of Government Types in 2017

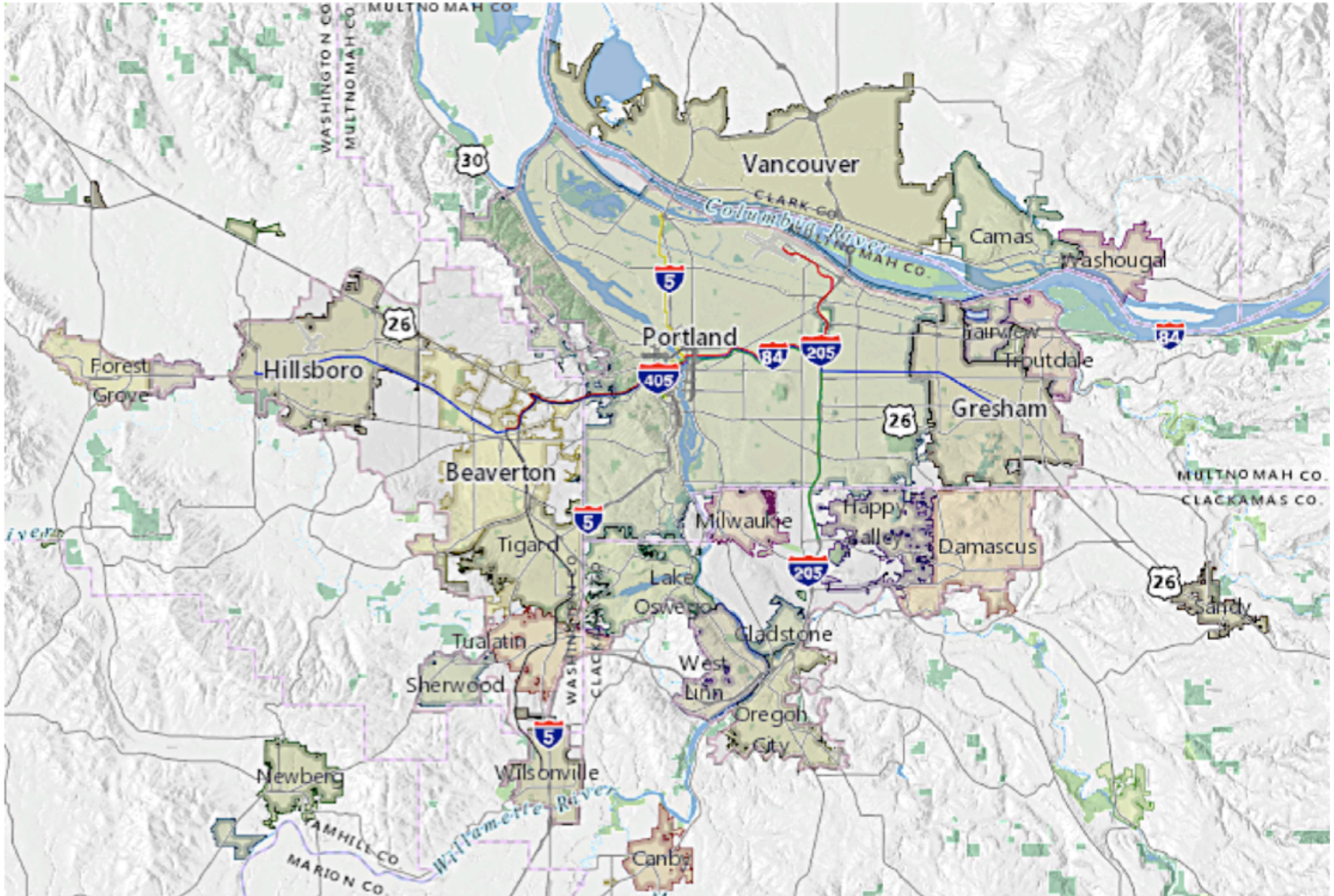


Mix of Special District Governments in 2017

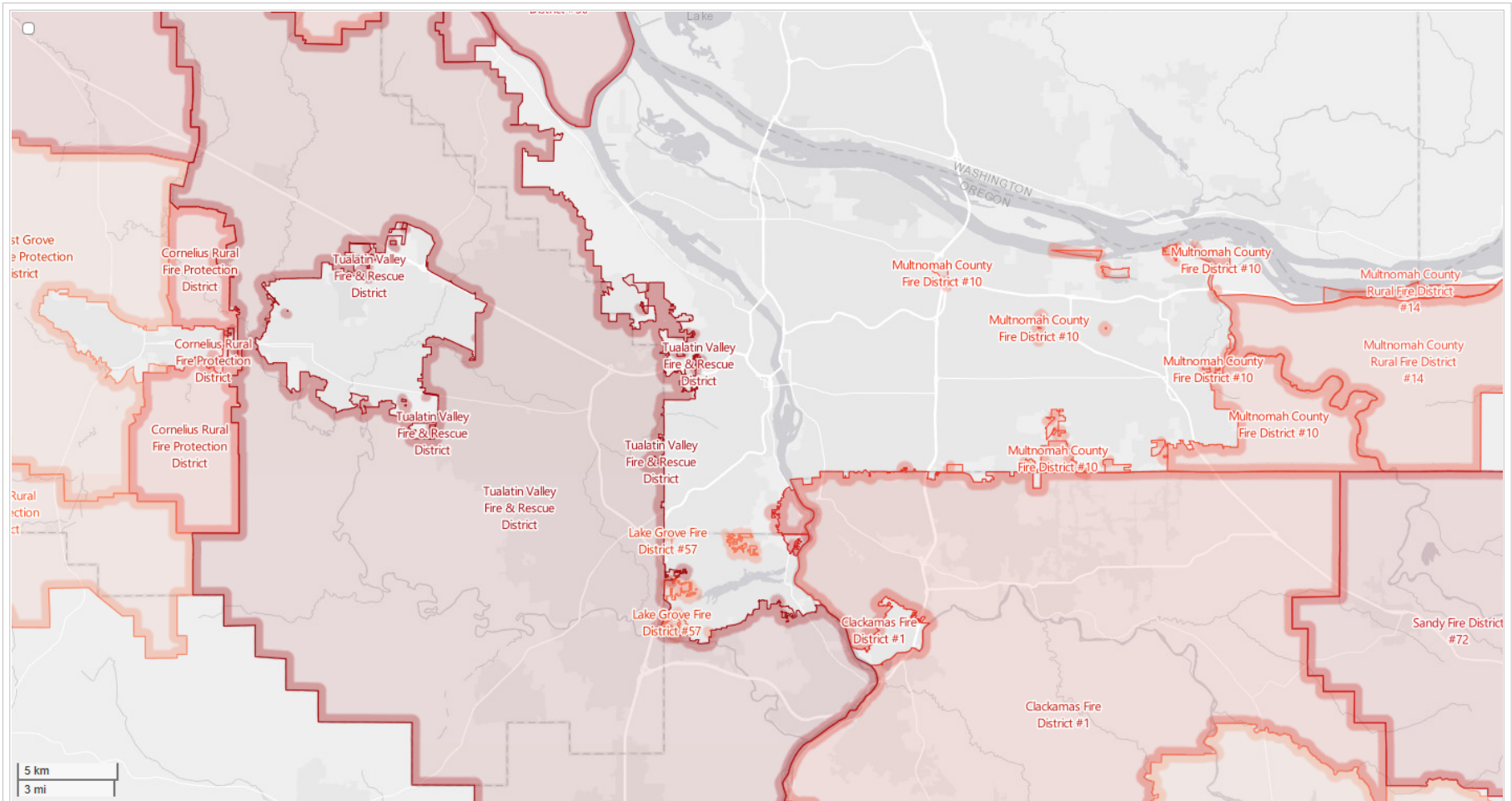


Metro Portland Governance Landscape

Incorporated Cities



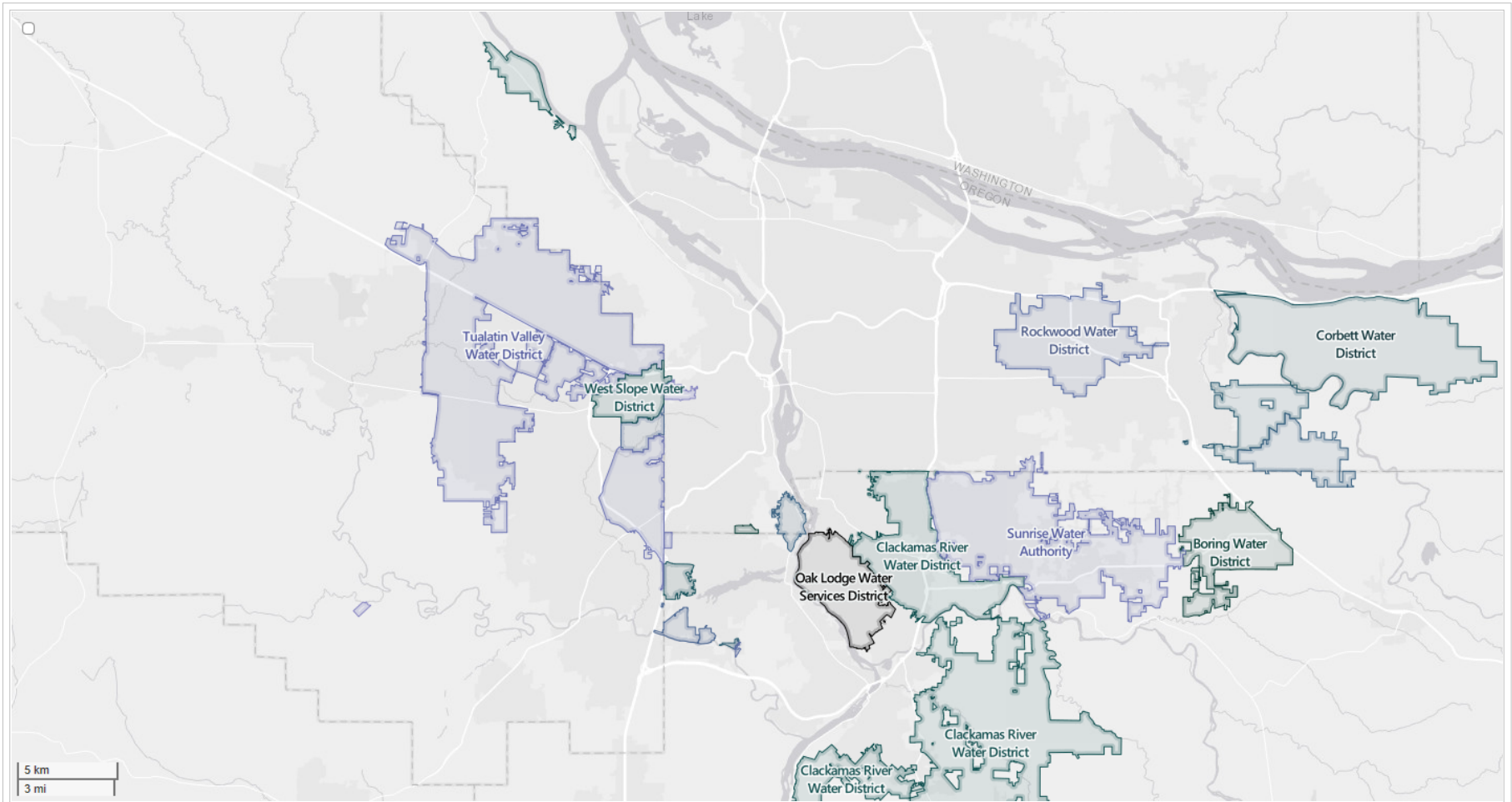
Fire Districts



Data Resource Center
600 NE Grand Ave, Portland, OR 97232
503.797.1742 – drc@oregonmetro.gov

This Web site is offered as a public service, integrating various government records into a region-wide mapping system. The property assessment records are a multi-county integration of Clackamas, Multnomah and Washington County records. MetroMap blends each county's records into a common database on a quarterly basis. Therefore, to view each county's official records, go to their respective web sites or offices. The other MetroMap data are derived from city, county, state, federal and Metro sources. The metadata (data about the data) are included on this site, including the sources to be consulted for verification of the information contained herein. It describes some cases where Metro blends city and county records by generalizing the disparities. Metro assumes no legal responsibility for the compilation of multi-source government information displayed by Metro Map.

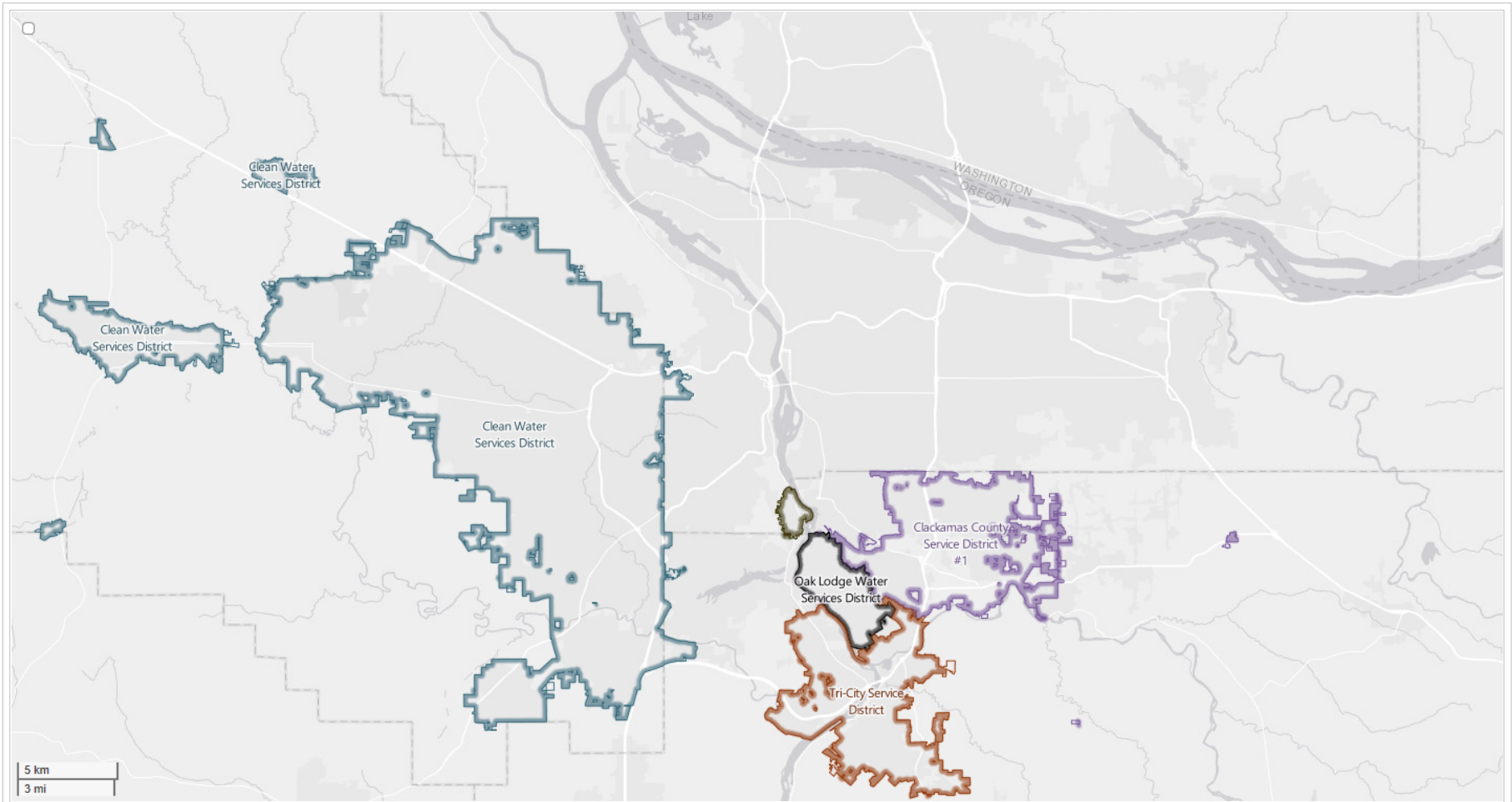
Water Districts



Data Resource Center
600 NE Grand Ave, Portland, OR 97232
503.797.1742 – drc@oregonmetro.gov

This Web site is offered as a public service, integrating various government records into a region-wide mapping system. The property assessment records are a multi-county integration of Clackamas, Multnomah and Washington County records. MetroMap blends each county's records into a common database on a quarterly basis. Therefore, to view each county's official records, go to their respective web sites or offices. The other MetroMap data are derived from city, county, state, federal and Metro sources. The metadata (data about the data) are included on this site, including the sources to be consulted for verification of the information contained herein. It describes some cases where Metro blends city and county records by generalizing the disparities. Metro assumes no legal responsibility for the compilation of multi-source government information displayed by Metro Map.

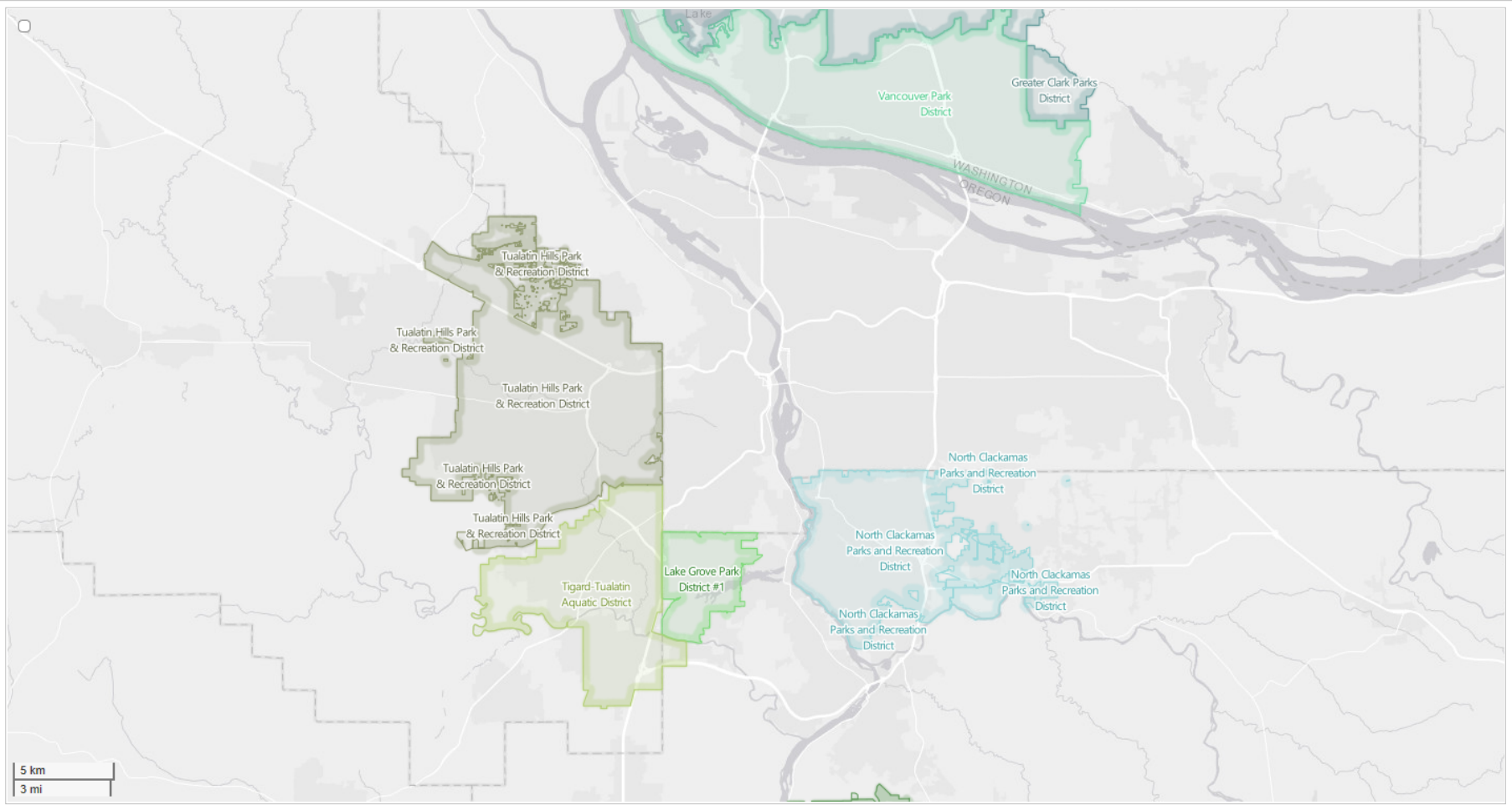
Sanitary Districts



Data Resource Center
600 NE Grand Ave, Portland, OR 97232
503.797.1742 – drc@oregonmetro.gov

This Web site is offered as a public service, integrating various government records into a region-wide mapping system. The property assessment records are a multi-county integration of Clackamas, Multnomah and Washington County records. MetroMap blends each county's records into a common database on a quarterly basis. Therefore, to view each county's official records, go to their respective web sites or offices. The other MetroMap data are derived from city, county, state, federal and Metro sources. The metadata (data about the data) are included on this site, including the sources to be consulted for verification of the information contained herein. It describes some cases where Metro blends city and county records by generalizing the disparities. Metro assumes no legal responsibility for the compilation of multi-source government information displayed by Metro Map.

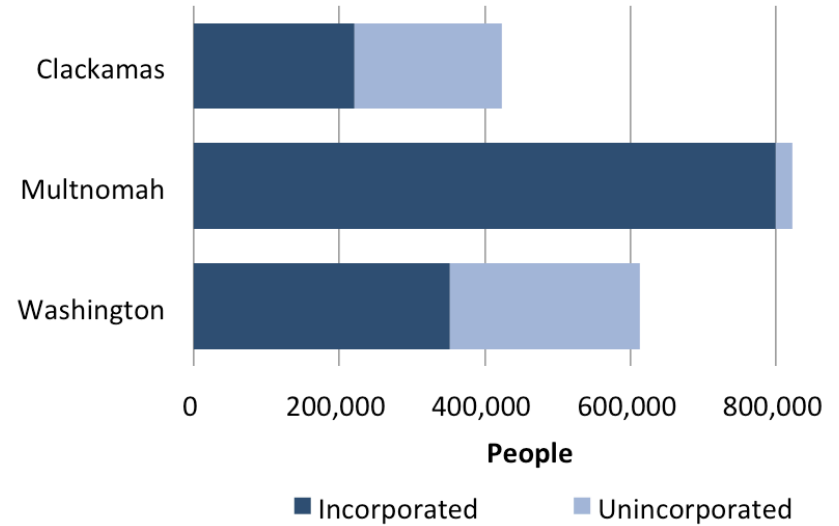
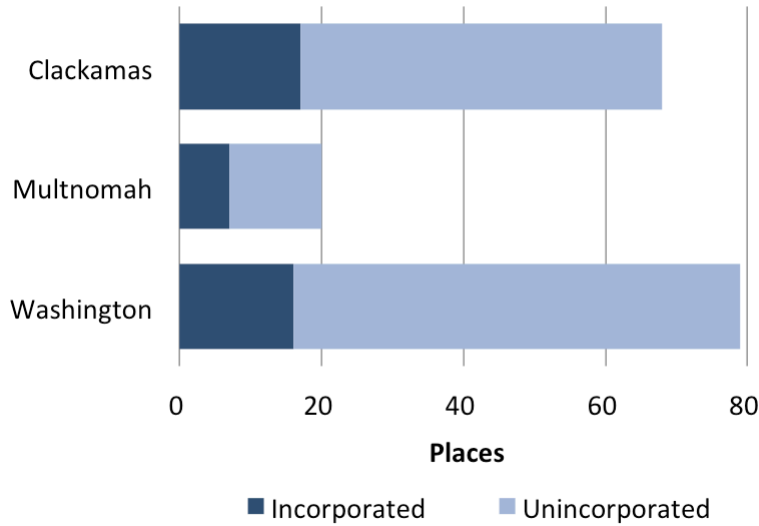
Parks and Recreation Districts



Data Resource Center
600 NE Grand Ave, Portland, OR 97232
503.797.1742 – drc@oregonmetro.gov

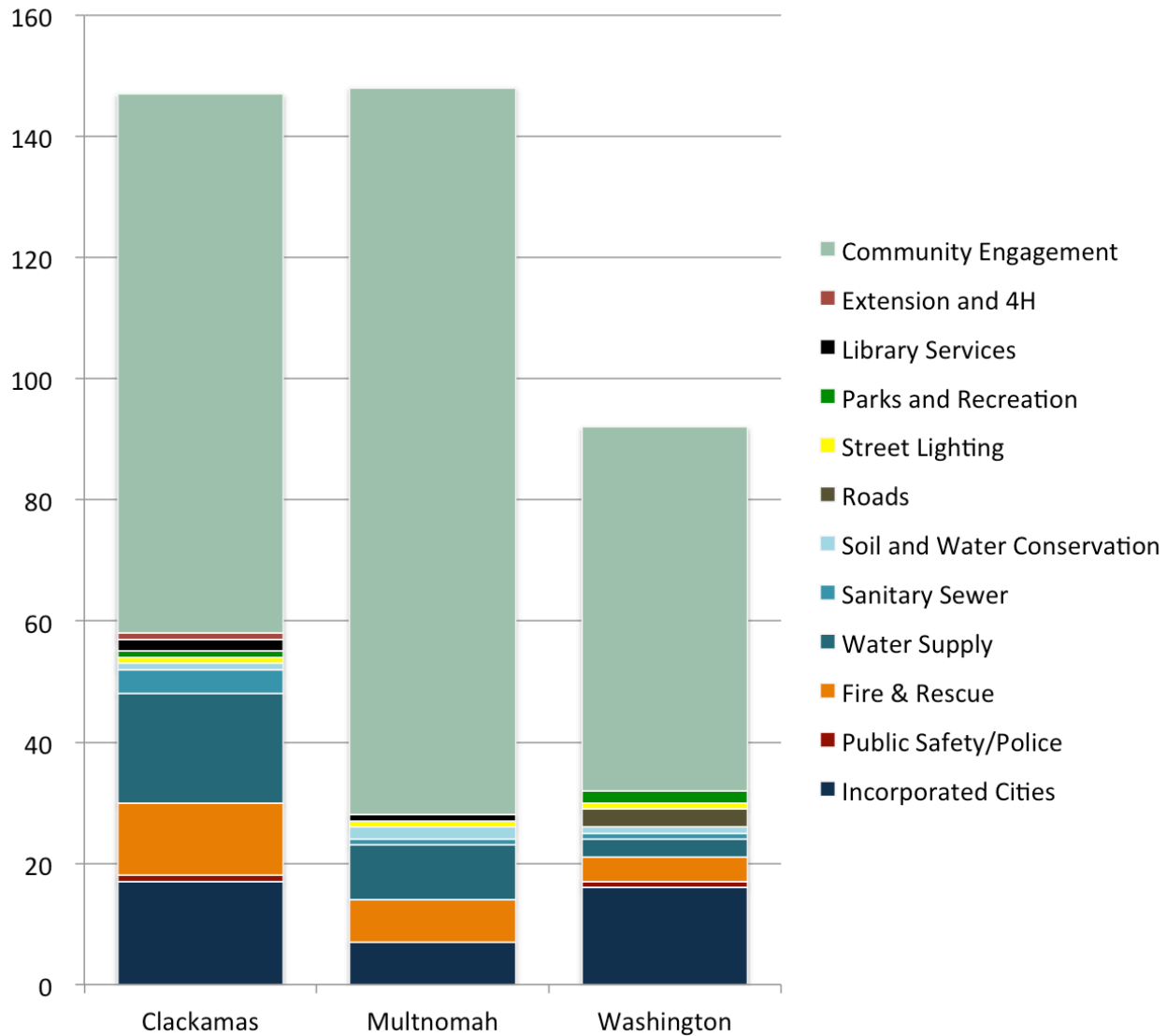
This Web site is offered as a public service, integrating various government records into a region-wide mapping system. The property assessment records are a multi-county integration of Clackamas, Multnomah and Washington County records. MetroMap blends each county's records into a common database on a quarterly basis. Therefore, to view each county's official records, go to their respective web sites or offices. The other MetroMap data are derived from city, county, state, federal and Metro sources. The metadata (data about the data) are included on this site, including the sources to be consulted for verification of the information contained herein. It describes some cases where Metro blends city and county records by generalizing the disparities. Metro assumes no legal responsibility for the compilation of multi-source government information displayed by Metro Map.

Places and People



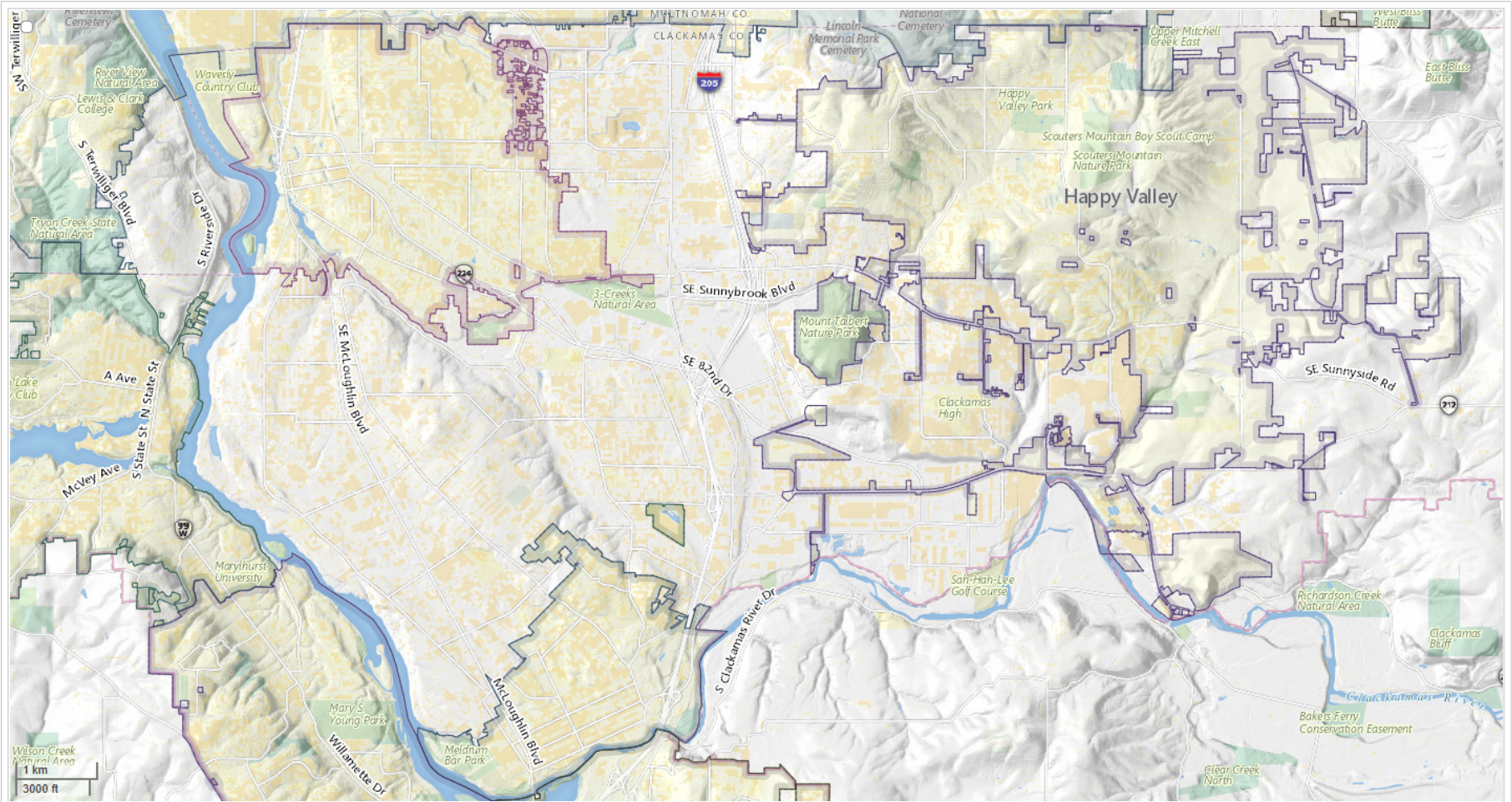
County	Places		People	
	Incorporated	Unincorporated	Incorporated	Unincorporated
Clackamas	17	51	221,530	201,890
Multnomah	7	13	799,100	22,630
Washington	16	63	352,555	260,855

Governance Structures



Governance Landscape along the Route 99E Corridor between Milwaukie and Gladstone

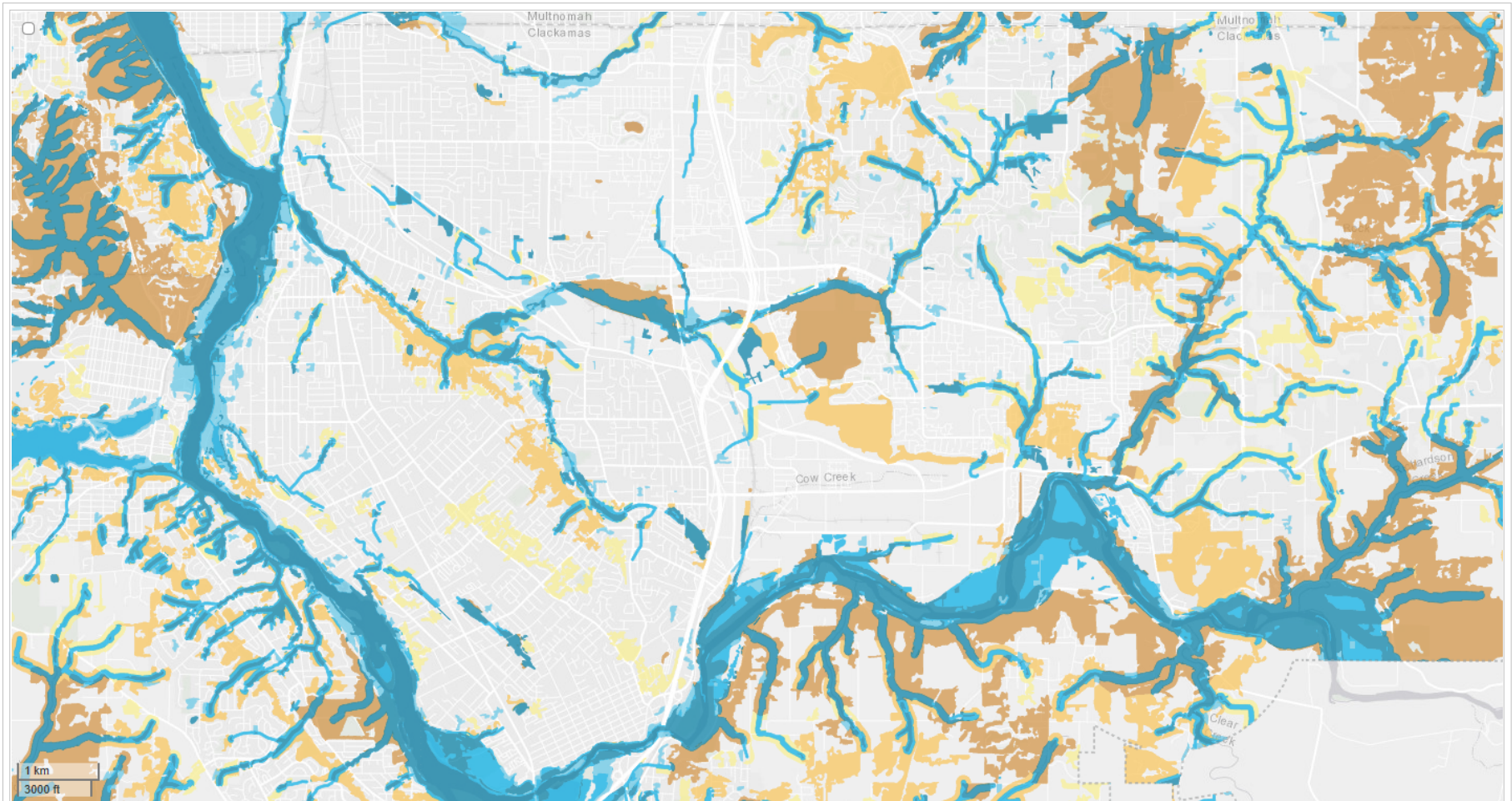
“Oak Lodge” and Surrounding Area



Metro
Data Resource Center
600 NE Grand Ave, Portland, OR 97232
503.797.1742 – dr@oregonmetro.gov

This Web site is offered as a public service, integrating various government records into a region-wide mapping system. The property assessment records are a multi-county integration of Clackamas, Multnomah and Washington County records. MetroMap blends each county's records into a common database on a quarterly basis. Therefore, to view each county's official records, go to their respective web sites or offices. The other MetroMap data are derived from city, county, state, federal and Metro sources. The metadata (data about the data) are included on this site, including the sources to be consulted for verification of the information contained herein. It describes some cases where Metro blends city and county records by generalizing the disparities. Metro assumes no legal responsibility for the compilation of multi-source government information displayed by Metro Map.

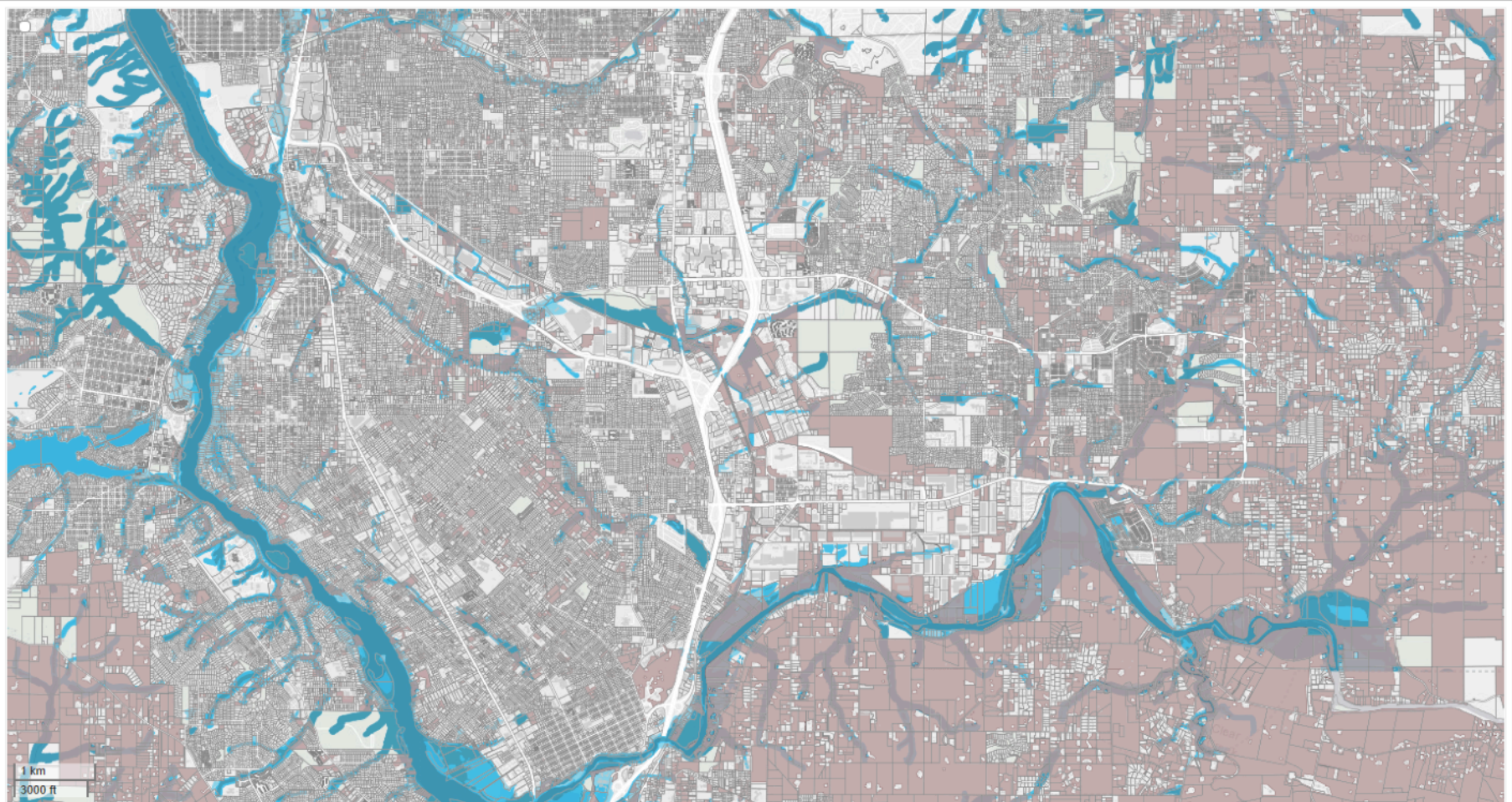
Natural Landscape – Upland, Riparian and Wetland Features



Metro
Data Resource Center
600 NE Grand Ave, Portland, OR 97232
503.797.1742 – drc@oregonmetro.gov

This Web site is offered as a public service, integrating various government records into a region-wide mapping system. The property assessment records are a multi-county integration of Clackamas, Multnomah and Washington County records. MetroMap blends each county's records into a common database on a quarterly basis. Therefore, to view each county's official records, go to their respective web sites or offices. The other MetroMap data are derived from city, county, state, federal and Metro sources. The metadata (data about the data) are included on this site, including the sources to be consulted for verification of the information contained herein. It describes some cases where Metro blends city and county records by generalizing the disparities. Metro assumes no legal responsibility for the compilation of multi-source government information displayed by Metro Map.

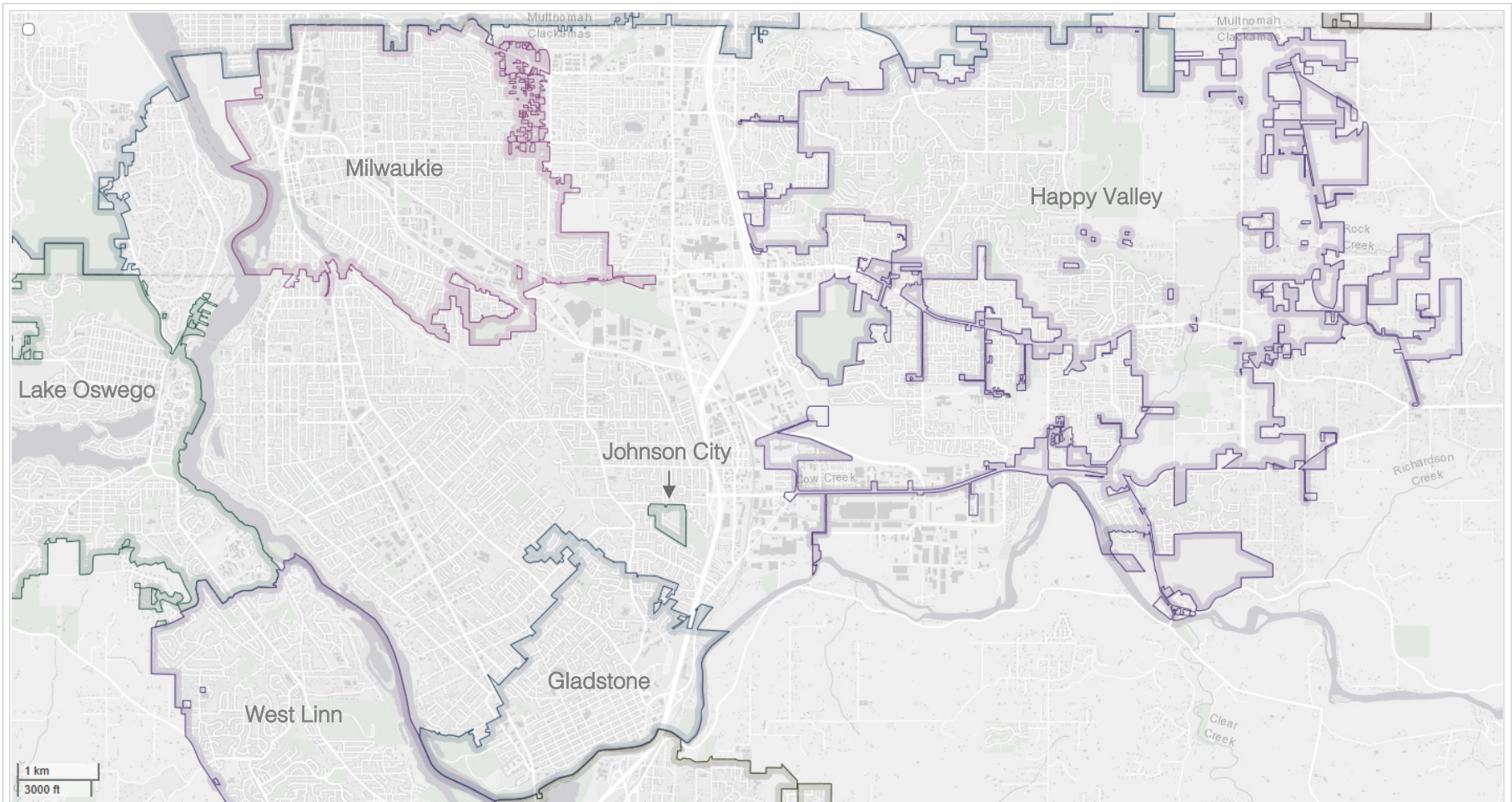
Human Settlement and Development



Data Resource Center
600 NE Grand Ave, Portland, OR 97232
503.797.1742 – drc@oregonmetro.gov

This Web site is offered as a public service, integrating various government records into a region-wide mapping system. The property assessment records are a multi-county integration of Clackamas, Multnomah and Washington County records. MetroMap blends each county's records into a common database on a quarterly basis. Therefore, to view each county's official records, go to their respective web sites or offices. The other MetroMap data are derived from city, county, state, federal and Metro sources. The metadata (data about the data) are included on this site, including the sources to be consulted for verification of the information contained herein. It describes some cases where Metro blends city and county records by generalizing the disparities. Metro assumes no legal responsibility for the compilation of multi-source government information displayed by Metro Map.

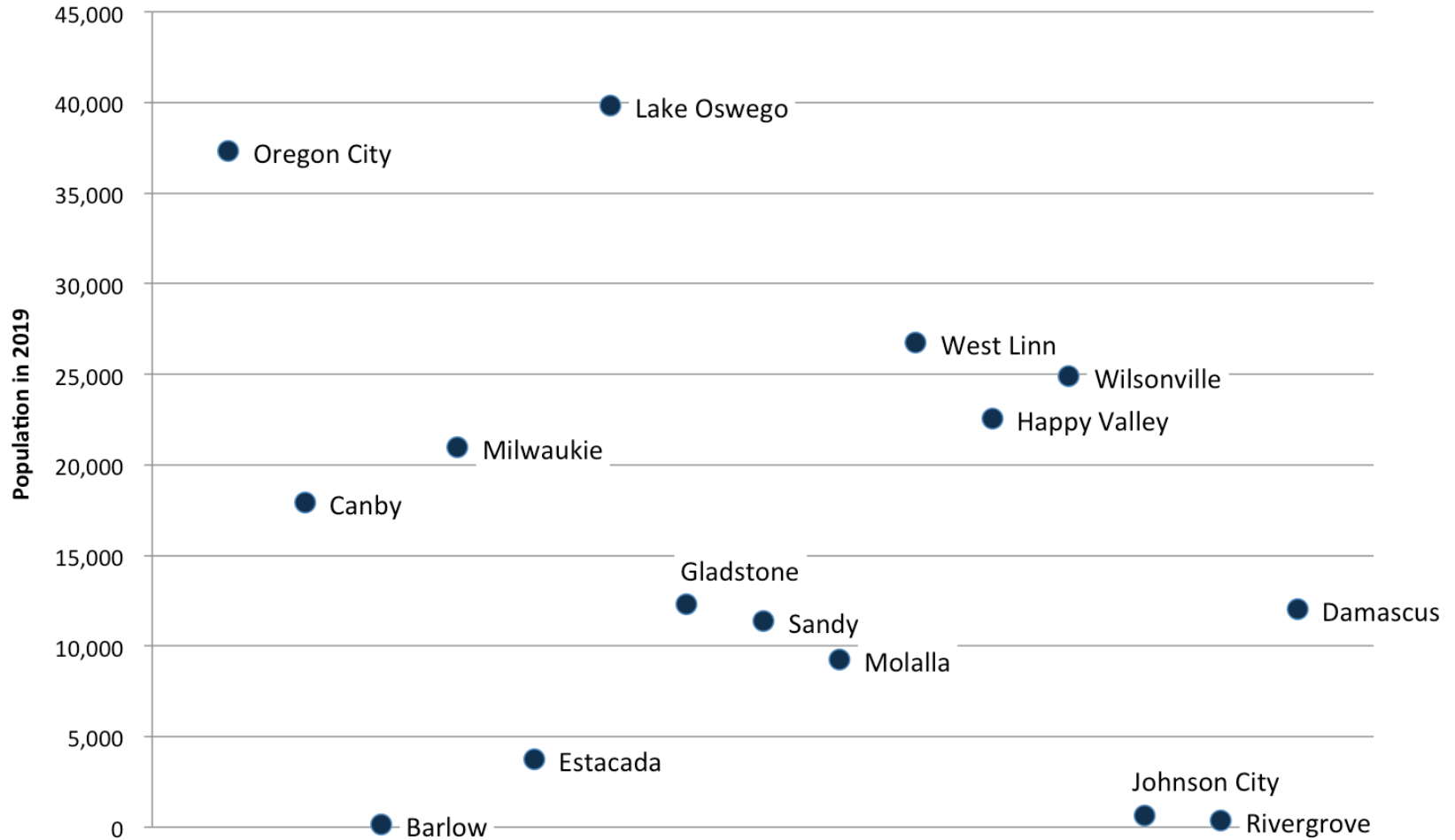
Incorporated Cities



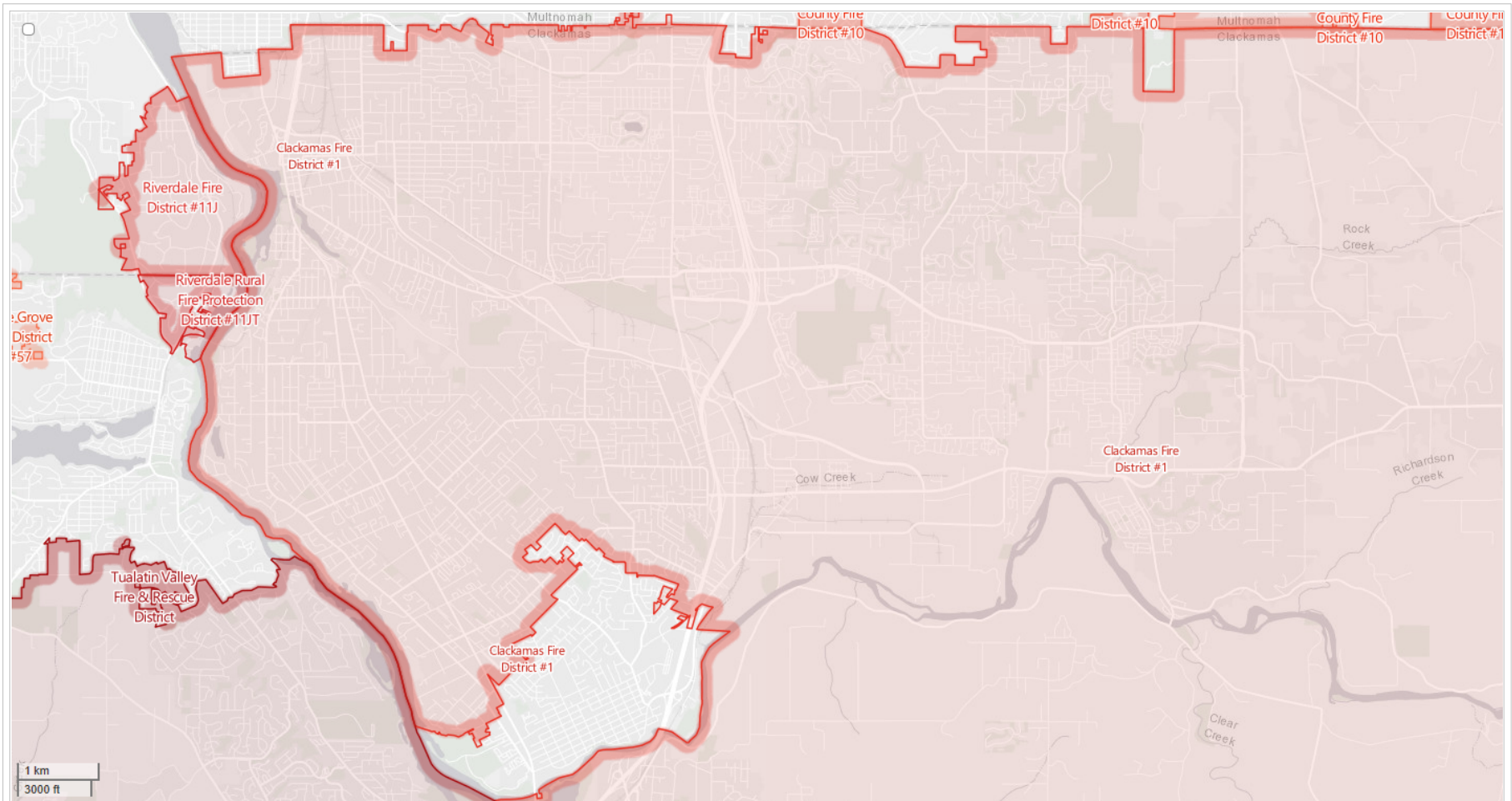
Metro
Data Resource Center
600 NE Grand Ave, Portland, OR 97232
503.797.1742 – drc@oregonmetro.gov

This Web site is offered as a public service, integrating various government records into a region-wide mapping system. The property assessment records are a multi-county integration of Clackamas, Multnomah and Washington County records. MetroMap blends each county's records into a common database on a quarterly basis. Therefore, to view each county's official records, go to their respective web sites or offices. The other MetroMap data are derived from city, county, state, federal and Metro sources. The metadata (data about the data) are included on this site, including the sources to be consulted for verification of the information contained herein. It describes some cases where Metro blends city and county records by generalizing the disparities. Metro assumes no legal responsibility for the compilation of multi-source government information displayed by Metro Map.

Incorporated Cities in Clackamas County



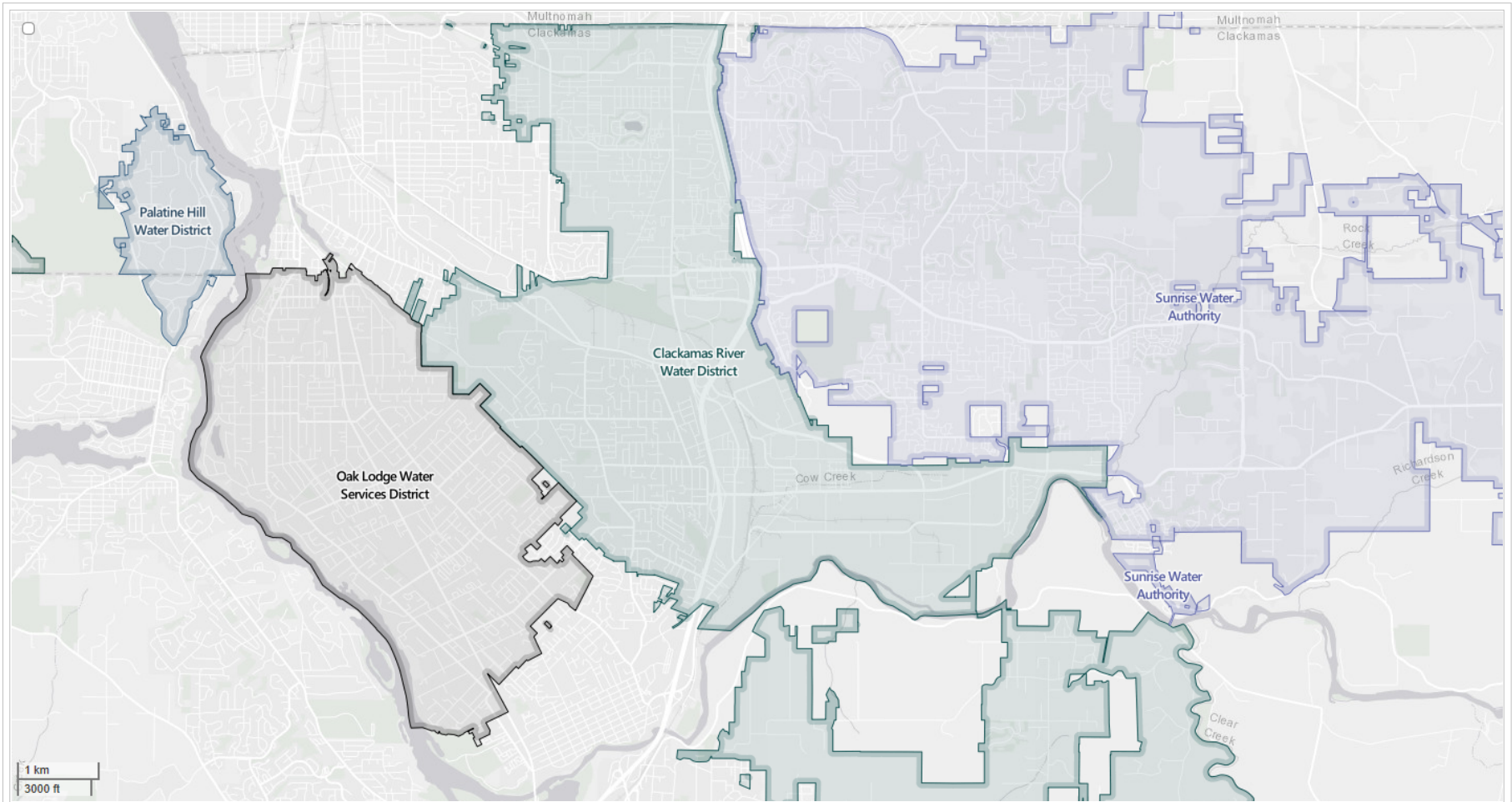
Fire Districts



Metro
Data Resource Center
600 NE Grand Ave, Portland, OR 97232
503.797.1742 – drc@oregonmetro.gov

This Web site is offered as a public service, integrating various government records into a region-wide mapping system. The property assessment records are a multi-county integration of Clackamas, Multnomah and Washington County records. MetroMap blends each county's records into a common database on a quarterly basis. Therefore, to view each county's official records, go to their respective web sites or offices. The other MetroMap data are derived from city, county, state, federal and Metro sources. The metadata (data about the data) are included on this site, including the sources to be consulted for verification of the information contained herein. It describes some cases where Metro blends city and county records by generalizing the disparities. Metro assumes no legal responsibility for the compilation of multi-source government information displayed by Metro Map.

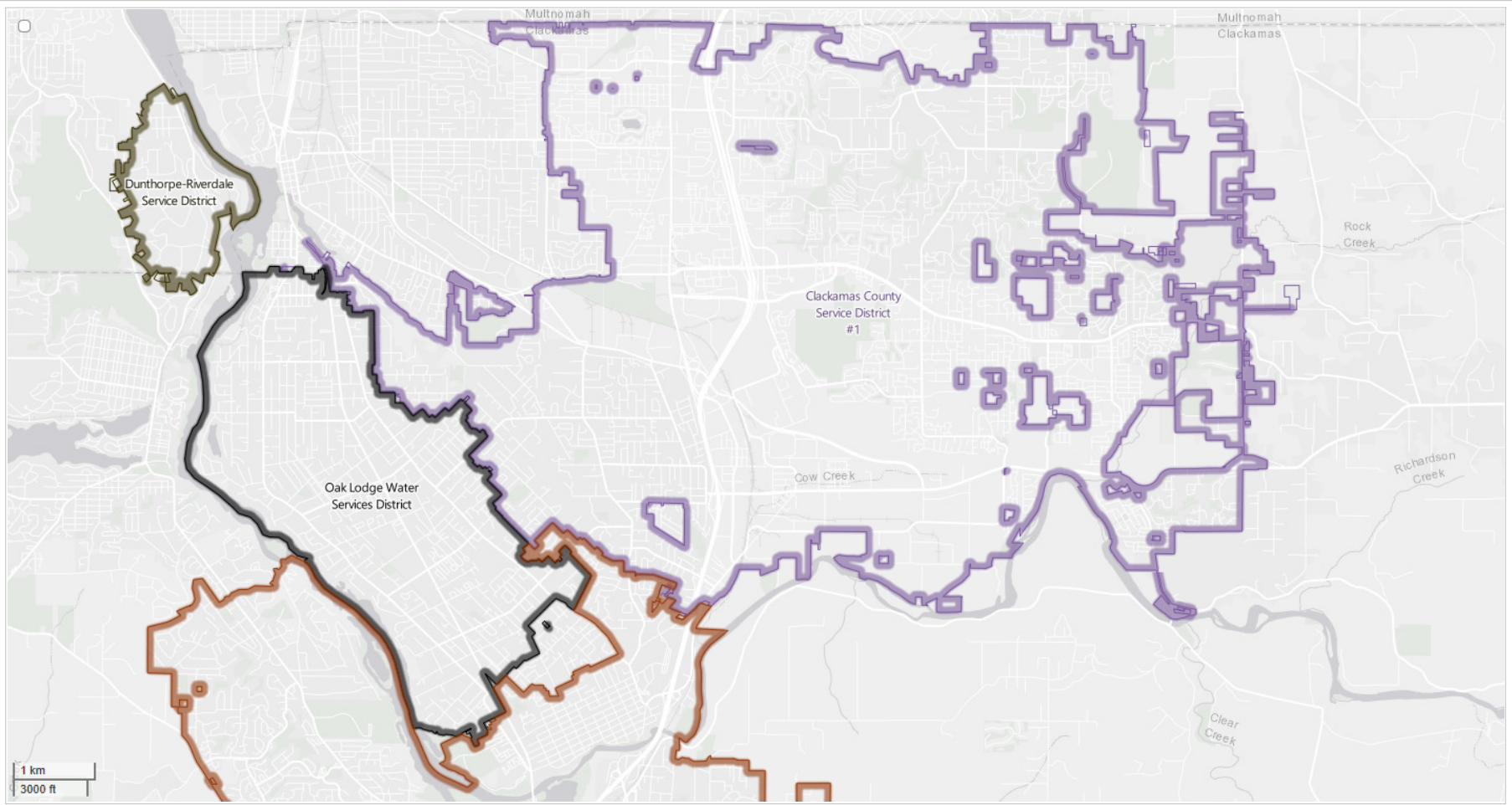
Water Districts



Metro
Data Resource Center
600 NE Grand Ave, Portland, OR 97232
503.797.1742 – drc@oregonmetro.gov

This Web site is offered as a public service, integrating various government records into a region-wide mapping system. The property assessment records are a multi-county integration of Clackamas, Multnomah and Washington County records. MetroMap blends each county's records into a common database on a quarterly basis. Therefore, to view each county's official records, go to their respective web sites or offices. The other MetroMap data are derived from city, county, state, federal and Metro sources. The metadata (data about the data) are included on this site, including the sources to be consulted for verification of the information contained herein. It describes some cases where Metro blends city and county records by generalizing the disparities. Metro assumes no legal responsibility for the compilation of multi-source government information displayed by Metro Map.

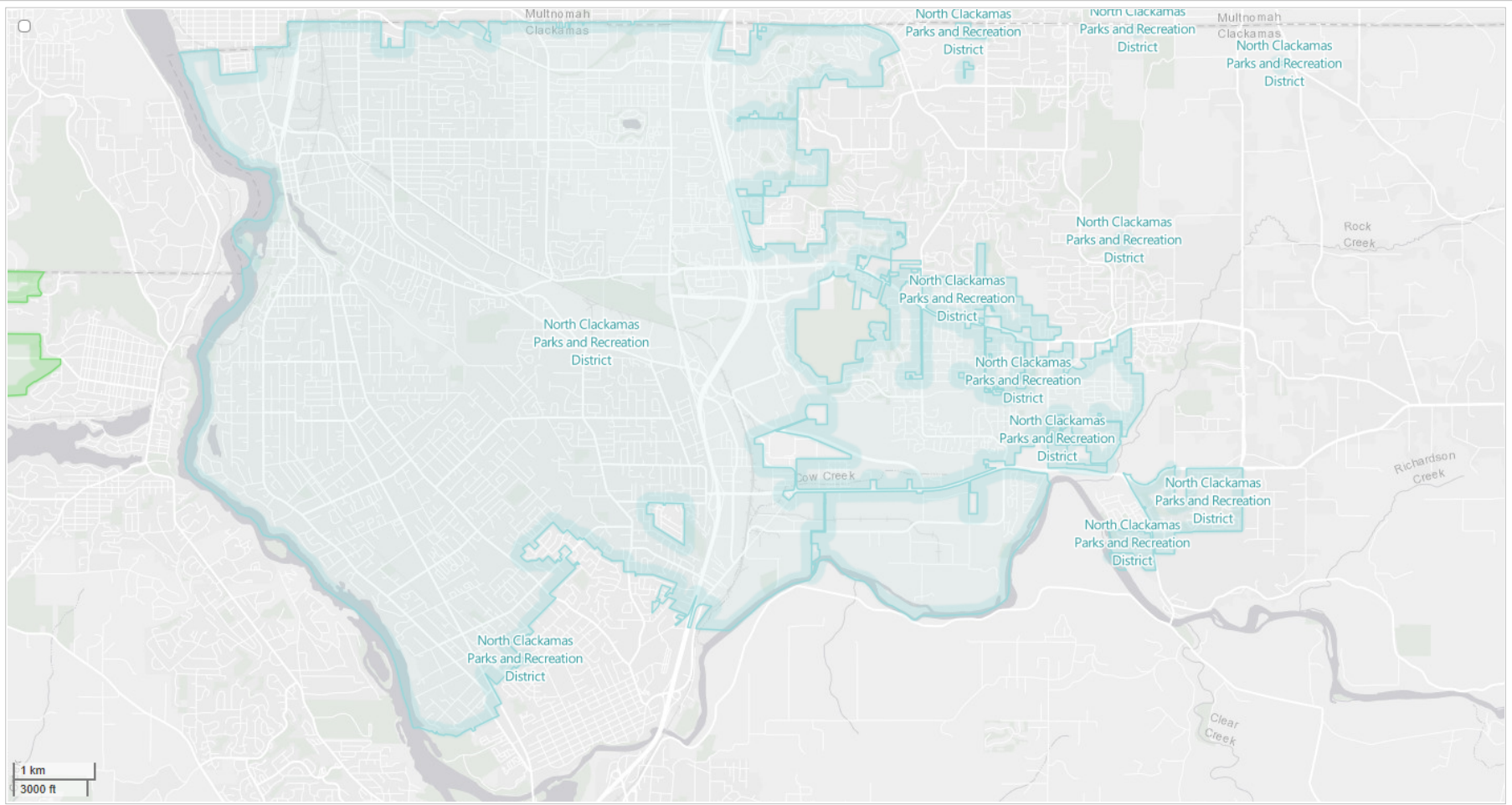
Sanitary Districts



Data Resource Center
600 NE Grand Ave, Portland, OR 97232
503.797.1742 – drc@oregonmetro.gov

This Web site is offered as a public service, integrating various government records into a region-wide mapping system. The property assessment records are a multi-county integration of Clackamas, Multnomah and Washington County records. MetroMap blends each county's records into a common database on a quarterly basis. Therefore, to view each county's official records, go to their respective web sites or offices. The other MetroMap data are derived from city, county, state, federal and Metro sources. The metadata (data about the data) are included on this site, including the sources to be consulted for verification of the information contained herein. It describes some cases where Metro blends city and county records by generalizing the disparities. Metro assumes no legal responsibility for the compilation of multi-source government information displayed by Metro Map.

Parks and Recreation Districts



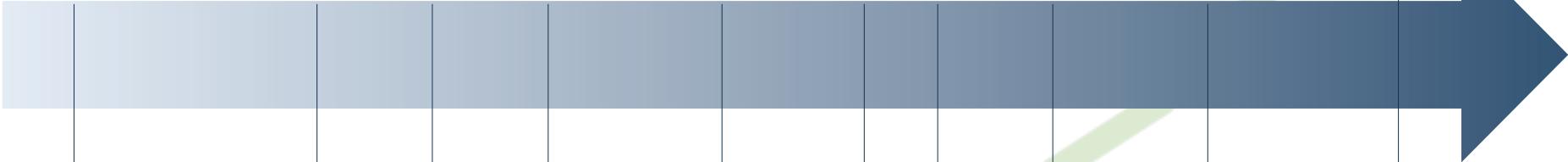
Data Resource Center
600 NE Grand Ave, Portland, OR 97232
503.797.1742 – drc@oregonmetro.gov

This Web site is offered as a public service, integrating various government records into a region-wide mapping system. The property assessment records are a multi-county integration of Clackamas, Multnomah and Washington County records. MetroMap blends each county's records into a common database on a quarterly basis. Therefore, to view each county's official records, go to their respective web sites or offices. The other MetroMap data are derived from city, county, state, federal and Metro sources. The metadata (data about the data) are included on this site, including the sources to be consulted for verification of the information contained herein. It describes some cases where Metro blends city and county records by generalizing the disparities. Metro assumes no legal responsibility for the compilation of multi-source government information displayed by Metro Map.

Oak Lodge Milestones of Self-Governance

Clackamas County Population...

1,859 (1850)	19,658 (1900)	37,698 (1910)	37,698 (1920)	57,130 (1940)	86,716 (1950)	113,038 (1960)	166,088 (1970)	278,850 (1990)	418,187 (2019)
-----------------	------------------	------------------	------------------	------------------	------------------	-------------------	-------------------	-------------------	-------------------



1843 1903 1911 1922 1940s 1956 1959 1970 1990 2017

Clackamas District established by the Oregon Provisional Legislature

Milwaukie Incorporates

Gladstone Incorporates

Oak Lodge Water District

Oak Lodge Fire Department

Oak Lodge Sanitary Districts (1 & 2)

Oak Lodge Sanitary Districts merge in 1970

N Clackamas Park & Rec District





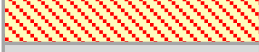
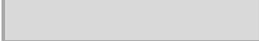
Oak Lodge Water Services District

1892 - First plat is filed on land in Oak Grove
 1903 - Jennings Lodge plat is filed

1965 - Happy Valley incorporates
 1970 - Johnson City incorporates

Urban Services

	Milwaukie	Happy Valley	Johnson City	Gladstone	West Linn	Lake Oswego
Police	Municipal	Municipal	No Service Provided	Municipal	Municipal	Municipal
Fire/Rescue	Special Service District	Special Service District	Special Service District	Municipal	Special Service District	Municipal
Parks/Rec	Special Service District	Municipal	No Service Provided	Municipal	Municipal	Combination - Municipal, Intergovernmental and Special Service District
Streets	Municipal	Municipal	No Service Provided	Municipal	Municipal	Municipal
Water	Combination - Municipal and Special Service District	Combination - Special Service District and No Service Provided	Special Service District	Combination - Municipal, Intergovernmental and Special Service District	Municipal	Combination - Municipal, Intergovernmental and Special Service District
Sewer	Municipal	Combination - Special Service District and No Service Provided	No Service Provided	Combination - Municipal, Intergovernmental and Special Service District	Combination - Municipal, Intergovernmental and Special Service District	Combination - Municipal, Intergovernmental and Special Service District
Stormwater	Municipal	Municipal	No Service Provided	Municipal	Municipal	Municipal
Planning	Municipal	Municipal	No Service Provided	Municipal	Municipal	Municipal
Development	Municipal	Municipal	No Service Provided	Municipal	Municipal	Municipal

	Municipal
	Special Service District
	Combination - Municipal, Intergovernmental and Special Service District
	Combination - Municipal and Special Service District
	Combination - Special Service District and No Service Provided
	No Service Provided

Property Tax Obligations

Public Service Provider	Milwaukie	Gladstone	Oak Grove	View Crest	Aldercrest	Jennings Lodge
County*						
City (includes city urban renewal)						
Enhanced Law Enforcement (County)						
Rural Fire Protection District						
Park & Recreation Service District						
Street Lighting Service District						
Vector Control Service District						
Community College						
County Education Services District						
School District**						
Port of Portland						
METRO						

* Includes Library, Extension and 4H, Public Safety Local Option and Radio System Bond and Urban Renewal

** Milwaukie, Oak Grove, View Crest and Aldercrest properties are served by the North Clackamas School District, Gladstone is serviced by the Gladstone School District, and Jennings Lodge is served by the Oregon City School District

QUESTIONS AND DISCUSSION